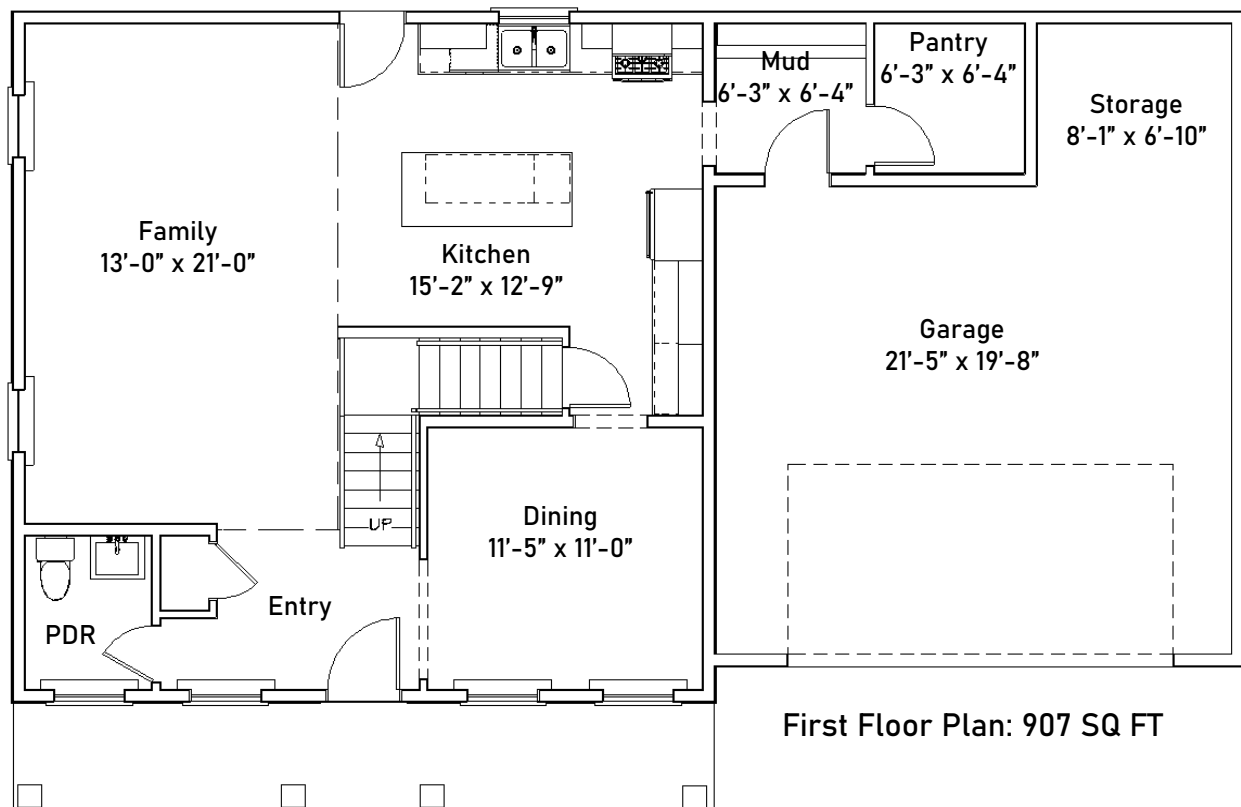
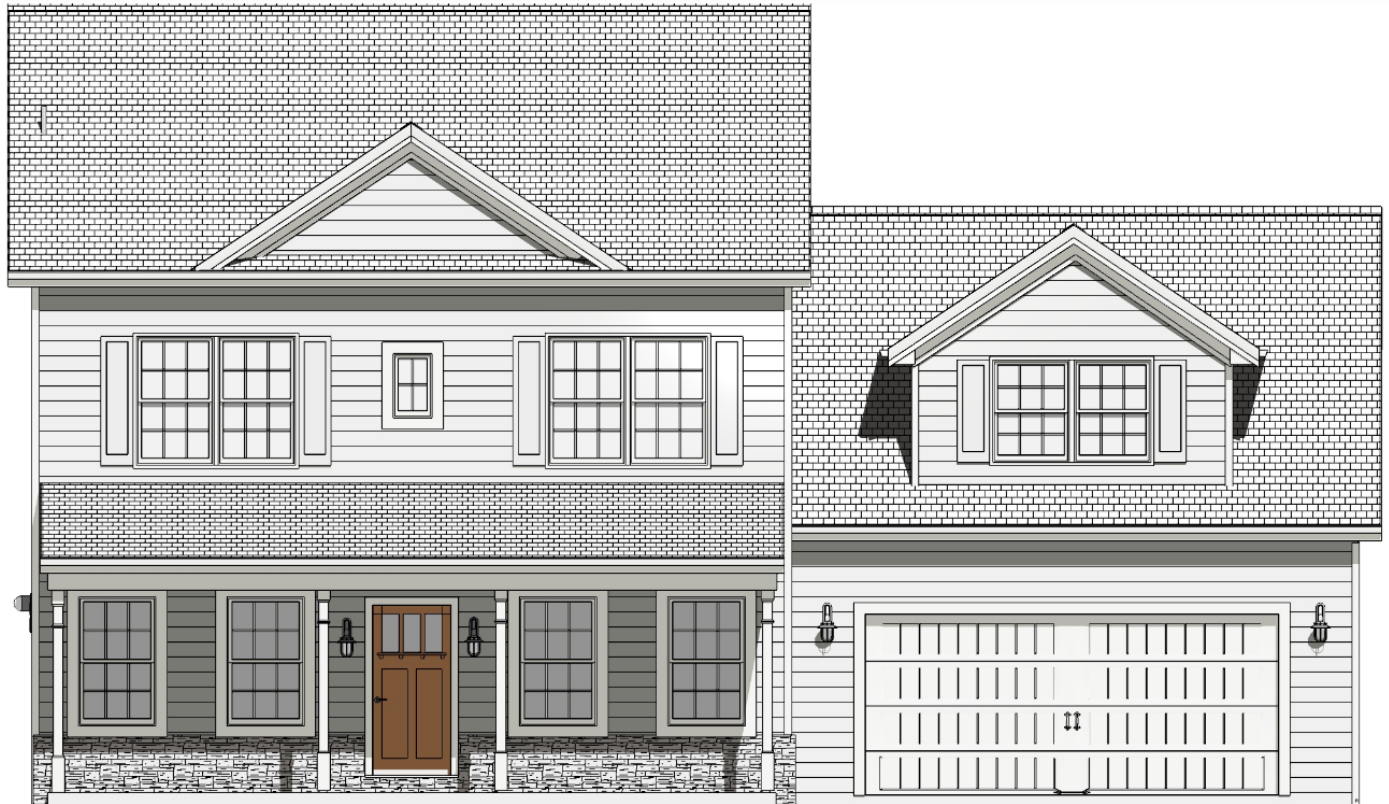


The JACQUELINE 2.0

BASE PRICE: \$342,455

BEDS: 4 | BATHS: 2.5 | SQ FT: 2,233



Renderings and floor plans are for representational purposes only. Scale and dimensions may vary from actual blueprints. All dimensions are subject to field variations. Rendering shows upgraded exterior features and options.

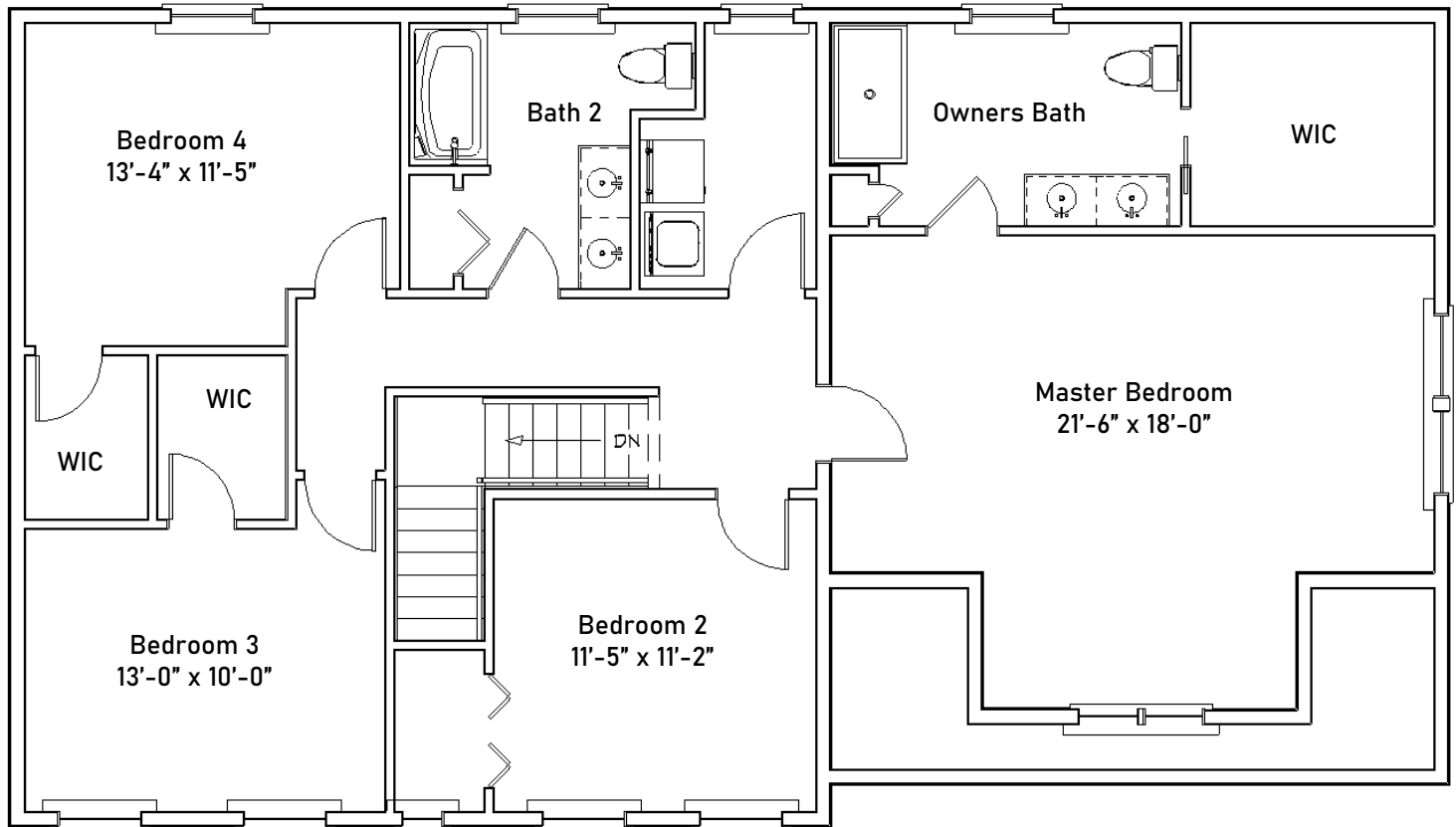
April 16, 2020

HUTCH
PA HOMES US

The JACQUELINE 2.0

BASE PRICE: \$342,455

BEDS: 4 | BATHS: 2.5 | SQ FT: 2,233



Second Floor Plan: 1,326 SQ FT

Renderings and floor plans are for representational purposes only. Scale and dimensions may vary from actual blueprints. All dimensions are subject to field variations.

April 16, 2020

HUTCH
PA HOMES US

SPECIFICATIONS

Included Exterior/Structural Features

Low maintenance vinyl siding
Mi 3500 single hung windows
Professional landscape package
Asphalt driveway and concrete front walks
30-year architectural shingles
Insulated garage door with remote
8' Superior Wall basement

Included Interior Features

9' ceilings throughout 1st floor
6 panel interior doors
2 1/4" "Colonial Style" casing
3 1/4" "Colonial Style" baseboard
Vinyl and carpet flooring throughout
Satin nickel hardware
Natural gas furnace

Included Kitchen Features

Choice of cabinet selection
Granite countertops
Stainless steel sink
Moen one handle chrome faucet
Stainless steel appliance package
Garbage disposal

Included Bathroom Features

Choice of vanity selection
Cultured marble countertops
Adult height vanities
Powder room includes pedestal sink
Moen chrome plumbing fixtures & accessories
Vinyl flooring

Structural Options—Not Included in Base Price

Fireplace—\$4,200
Natural Gas Hot Water Heater—\$1,270
Natural Gas Dryer Hookup—\$400
Natural Gas Appliance Hookup—\$400
Split Zone HVAC System—\$2,535
Humidifier—\$865

Personalized Upgrades—Price Upon Selection

Personalized cabinet & vanity selections
Personalized countertop selections
Personalized plumbing fixture selections
Personalized flooring selections
Personalized tile & backsplash selections
Personalized interior features